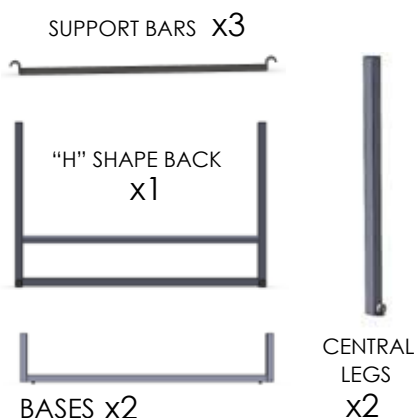


ASSEMBLY INSTRUCTIONS

EM16 BEACH NESTED CABINS

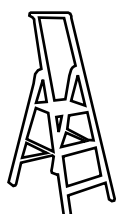
THE VIDEO OF THE ASSEMBLY IS AVAILABLE ONLINE: <https://en.egoparis.com/our-videos/>



INVENTORY



3 PEOPLE



x1 STEPLADDER

x1 SOFT Mallet



x1 HEXAGON KEY SIZE 5



x1 SOCKET WRENCH SIZE 10



x1 THICK BLANKET



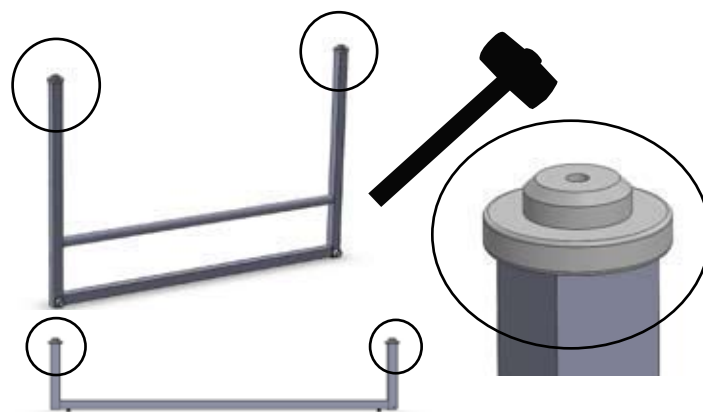
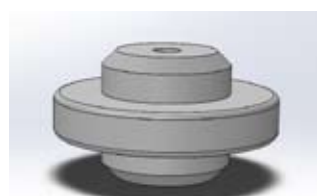
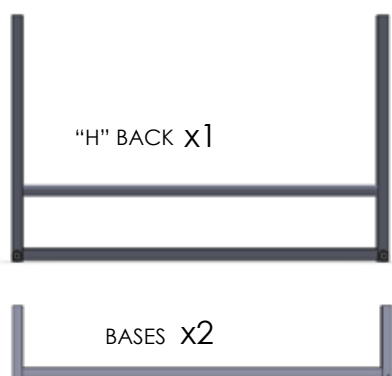
1



In order to protect it, assembly the cabin on the blanket.

2

With the soft mallet, hammer the white "bumpers" into the top of the bases and the center legs.

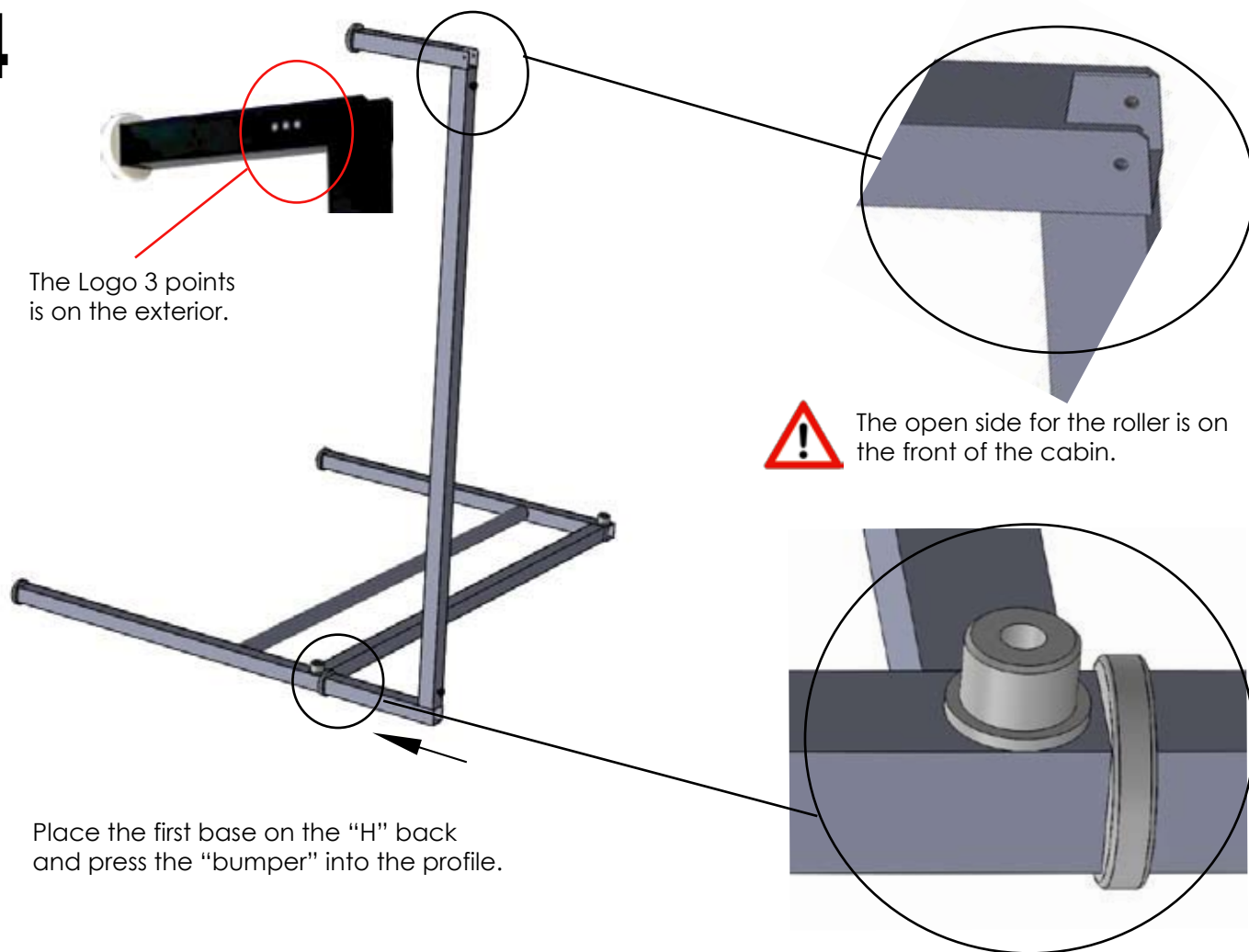


3

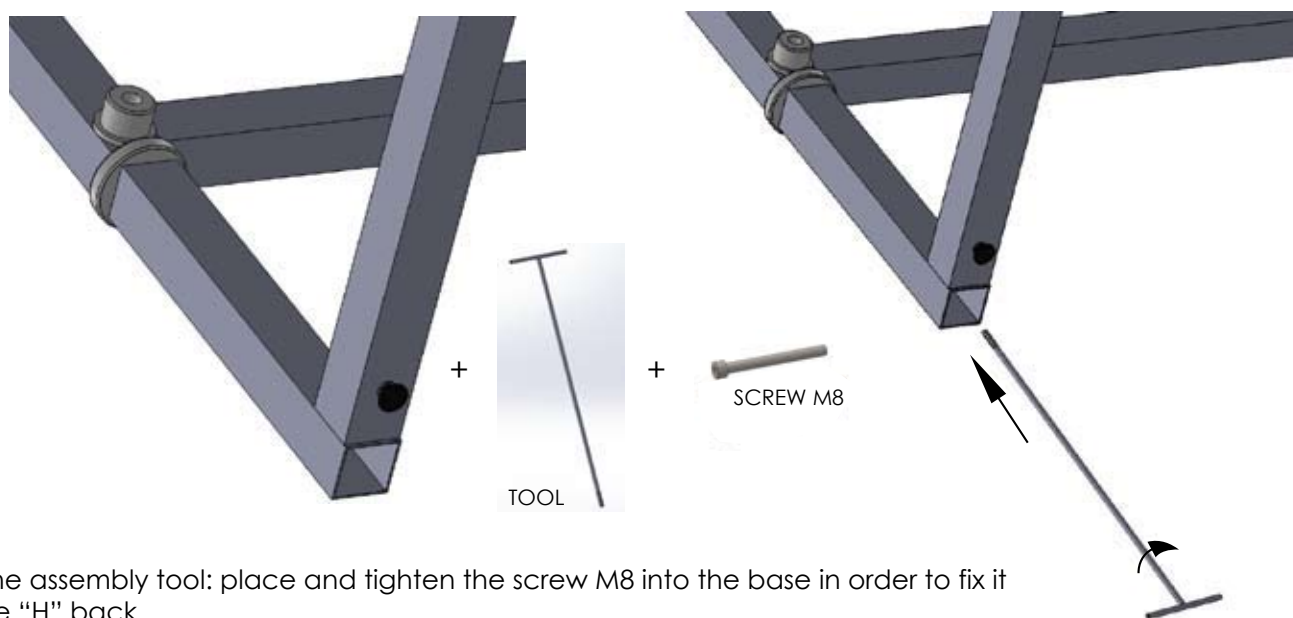


Lay the "H" BACK on the blanket.

4



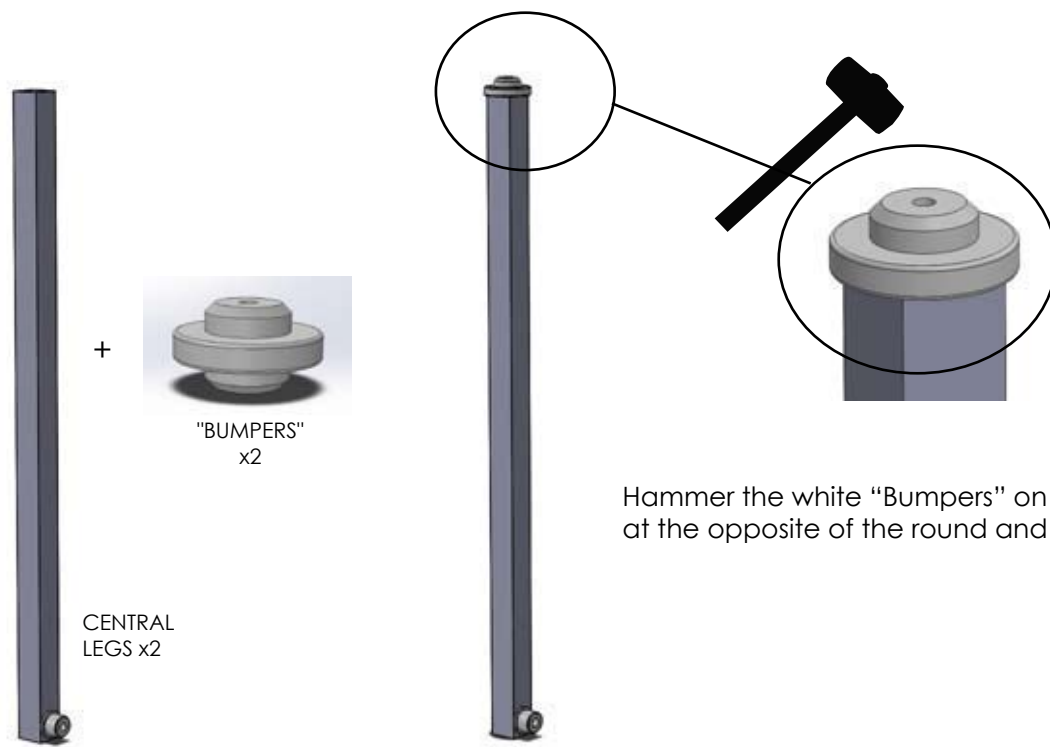
5



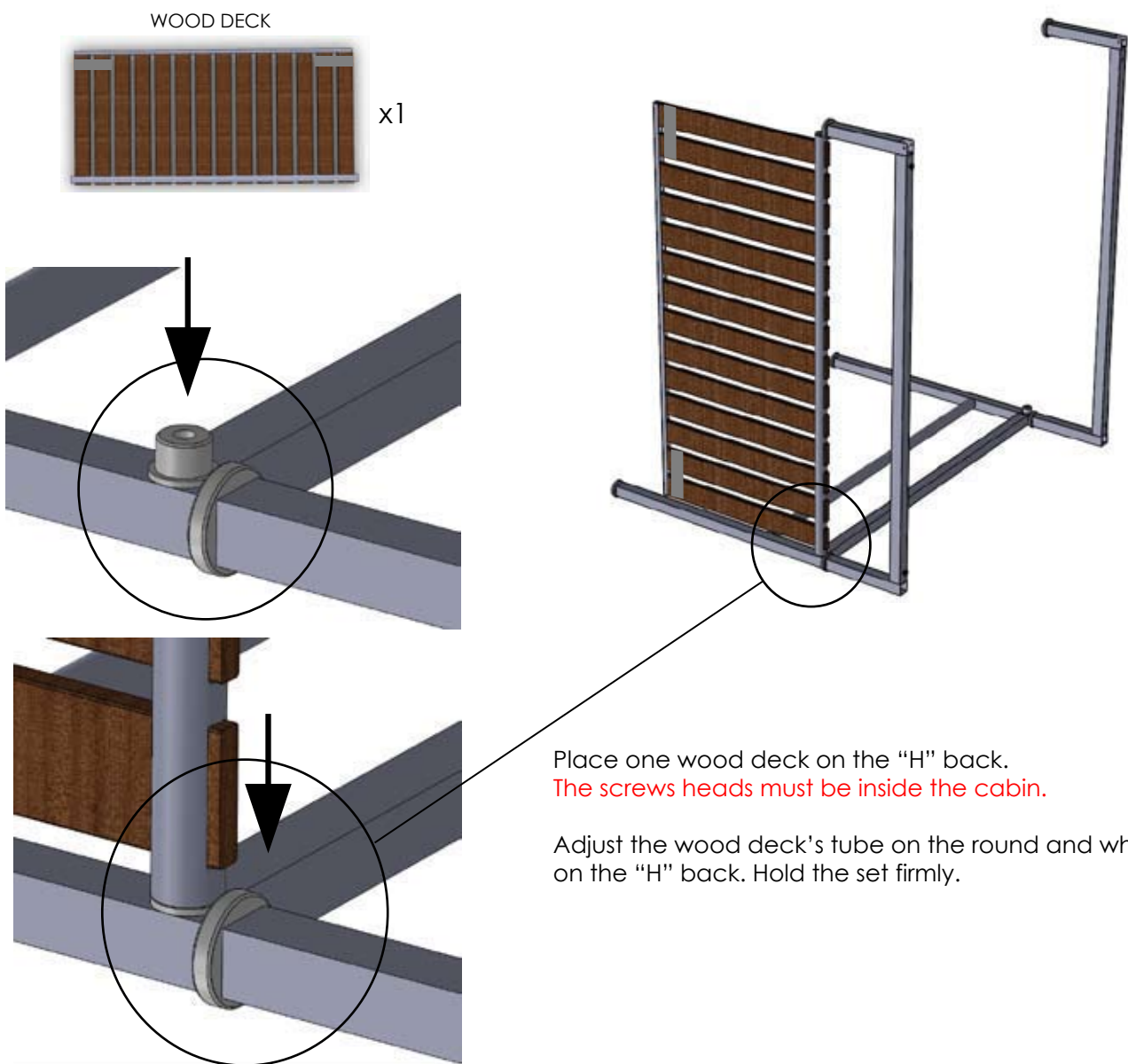
6



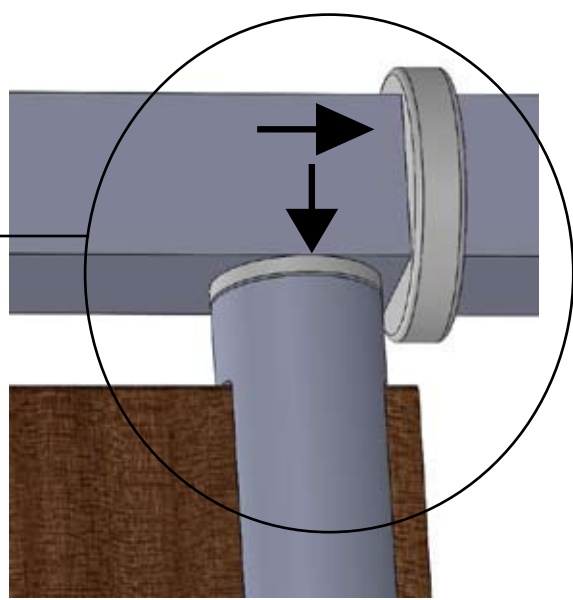
7



8

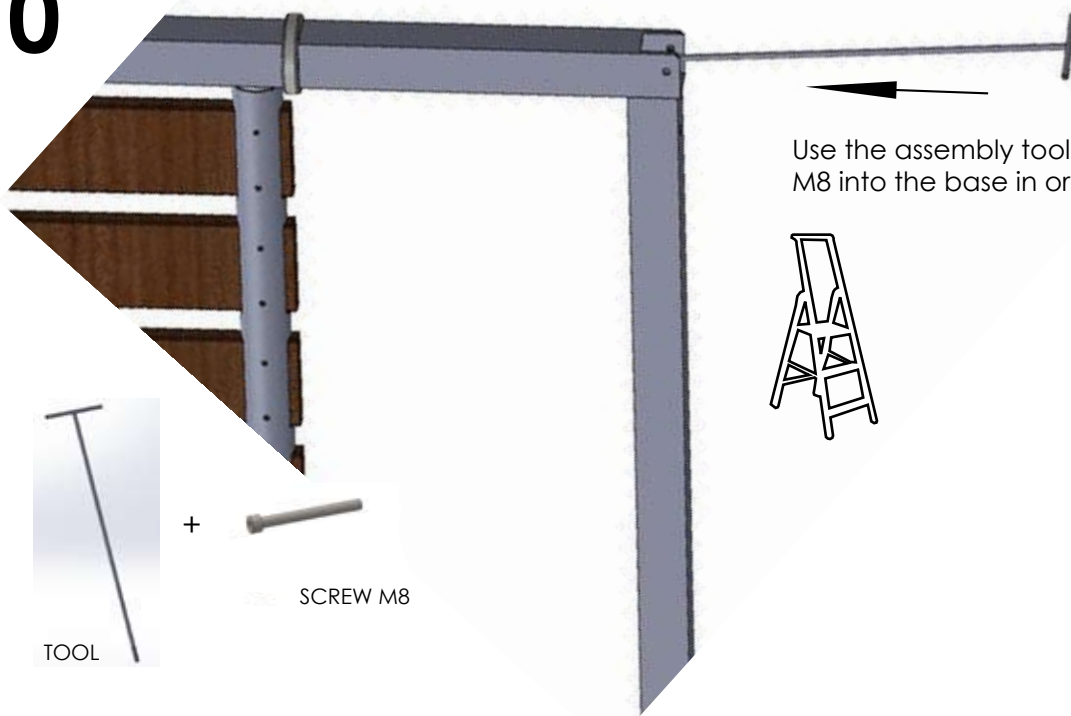


9



On The other side, place the central leg's white piece into the wood deck's tube and the "bumper" on the base.

10



Use the assembly tool: place and tighten the screw M8 into the base in order to fix it firmly.



+



SCREW M8

TOOL

11

With the two straps, bind the wood deck and the central leg.

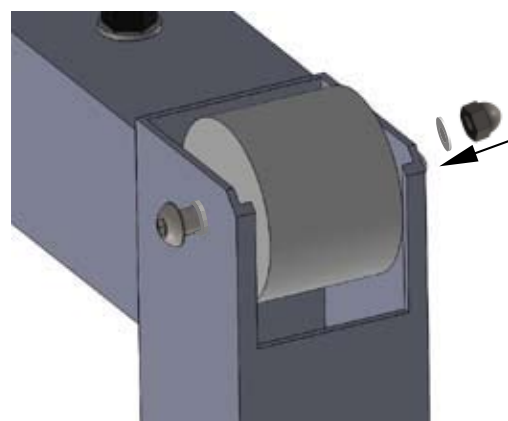
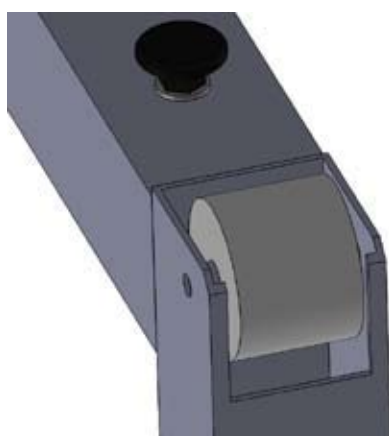
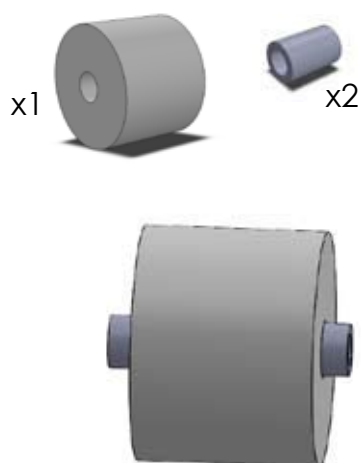
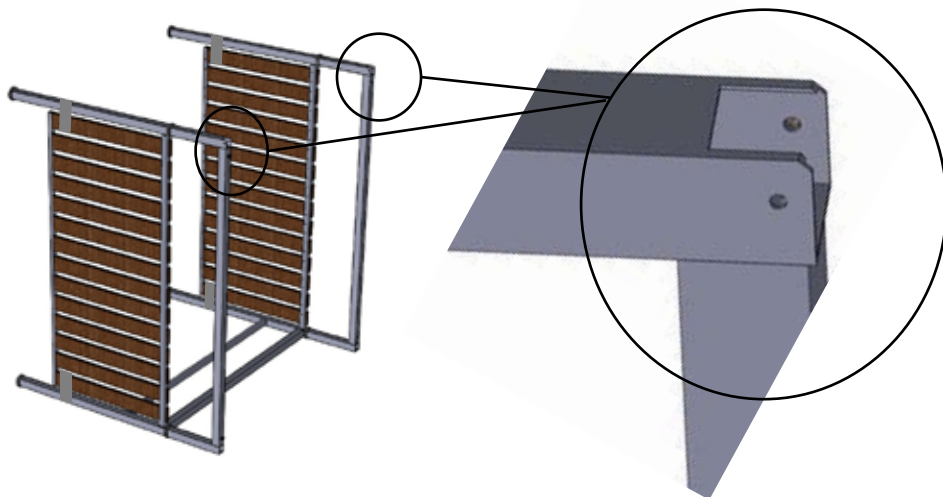
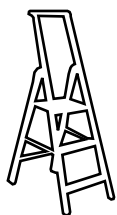


In order to assembly the second wood deck, repeat the operations 7 / 8 / 9 / 10 / 11.



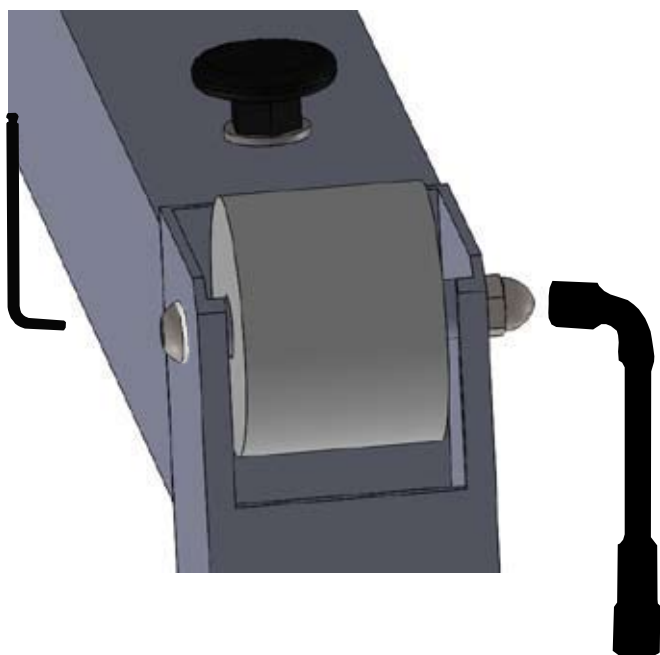
12

The assembly of the rollers :



A Insert the spacers into the roller **B** Place the roller into the tube

C The cap nut must be on the exterior of the cabin.
Place a washer under the screw head and a second one between the nut and the base



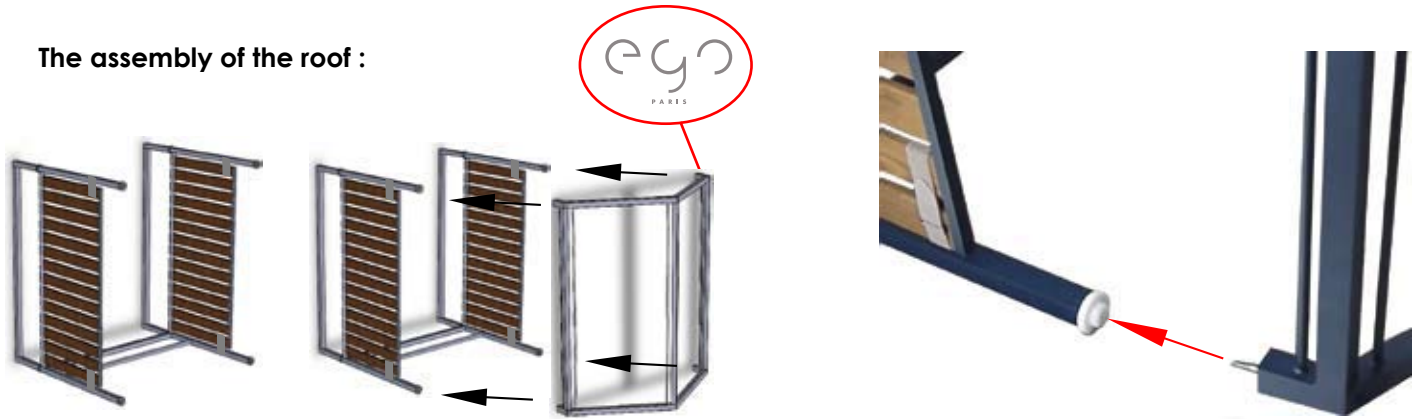
D Tighten the set with the hexagon key size 5 and the socket wrench size 10.

Repeat this for the second roller.



The logo in on the front of the cabin.

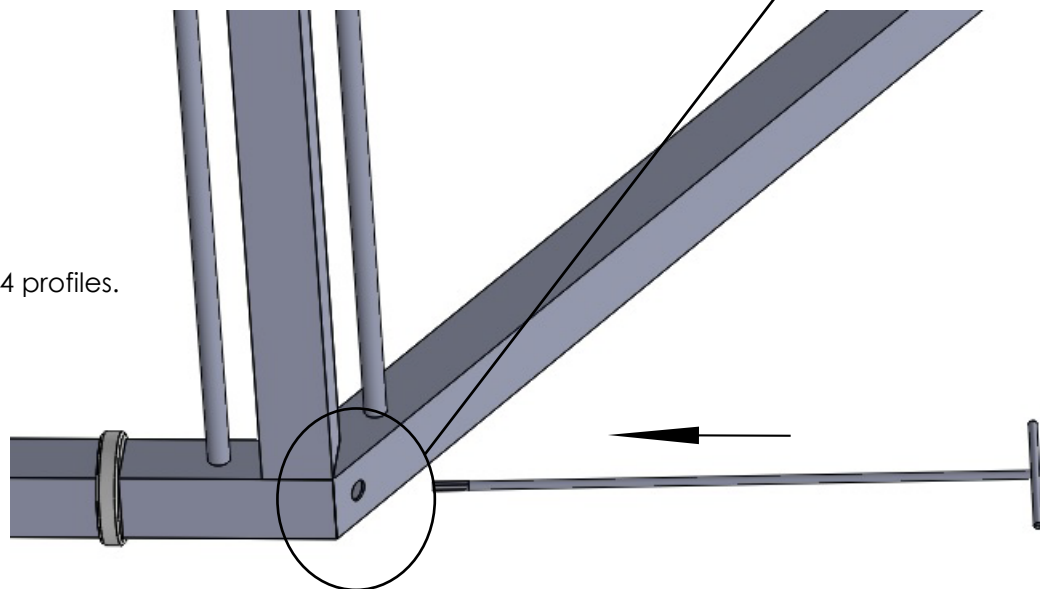
The assembly of the roof :



- A** Embed the "bumpers" in the roof's profiles.
The screws are already inside the structure.



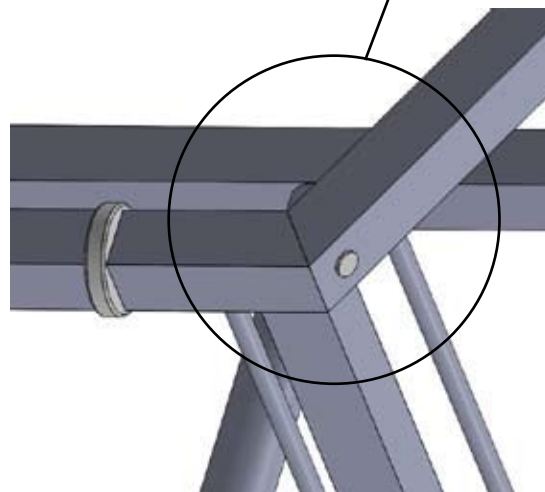
- B** Use the assembly tool, place it on the screw inside the structure and tighten firmly the roof on the 4 profiles.



- C** Place the 4 protective caps onto the holes.



x4



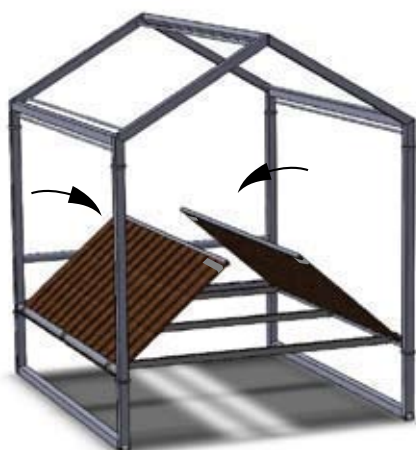
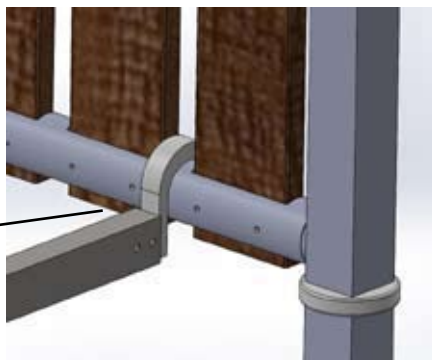
Flip the cabin.

14

SUPPORT BARS x3



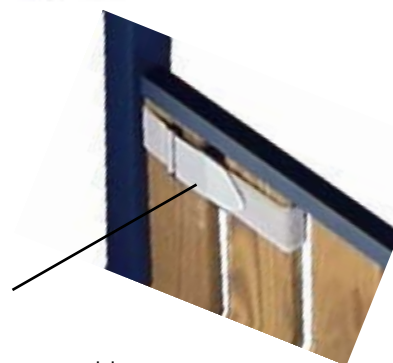
A Place the 3 support bars on the structure.



B Untie the straps and wrap them around the wood slat.

C Wind down the two wood decks on the support bars.

Don't pinch your fingers !



15



Place the 3 shades by sliding the panels between the tubes.
Position the mattresses.



TO READ IMPERATIVELY BEFORE USE



Weight limit on the wood deck, depending on the Beach Nested Cabins size:

EM16CGB Biarritz / EM16CGD Deauville / EM16CGH Honfleur : **240 kg / 530 lbs**
 EM16CGN Noirmoutier / EM16CGP Pampelonne : **360 kg / 793 lbs**

Never exceed this limit.

Don't stand on the wood deck.
Don't jump on the wood deck.
Don't hang on the crossbars.

Don't let young children unsupervised into the cabin.



When **moving** the cabins:

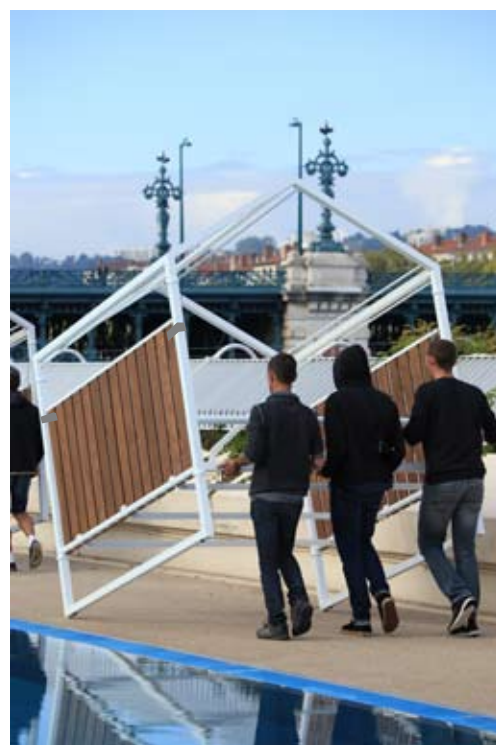
tie imperatively the straps
in order to maintain the wood deck
+
leave the 3 support bars in place



STRAPS x4



SUPPORT BARS x3



THE WIND PRESSURE:

Above 35km/h: remove the shades and wind down the 2 wood decks

Above 70km/h: store the cabins in a protected area



Visit our website and read our maintenance advices

www.egoparis.com

EGO Paris cannot assume responsibility for special, indirect, consequential damages or contingent liability for use of the Beach Nested Cabins in a manner not expressly intended by the manufacturer.

The end consumer is ultimately responsible for verifying proper installation of the Beach Nested Cabins according to our guidelines herein.

